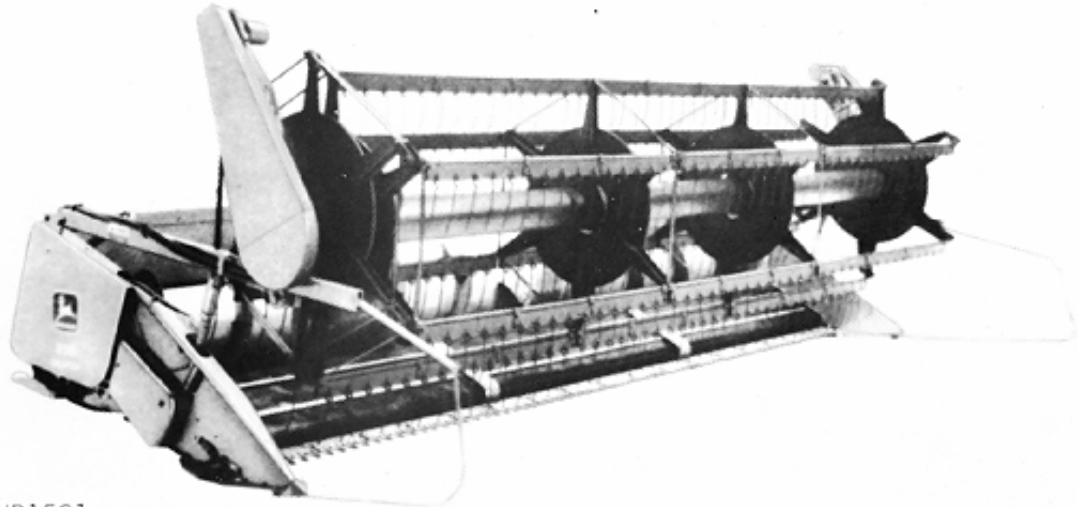


HP1521 -UN-01JAN94



HP1521

JOHN DEERE 918 DRAPER PLATFORM (-635900)

JOHN DEERE 920 DRAPER PLATFORM (646301-)

(SPECIFICATIONS AND DESIGN SUBJECT TO CHANGE WITHOUT NOTICE)

SERIAL NUMBER PLATE

USE ALL NUMBERS, LETTERS, AND SPACES SHOWN ON THE SERIAL NUMBER PLATE IN WARRANTY CORRESPONDENCE.

918 DRAPER PLATFORMS (625801-)

ON THESE 918 DRAPER PLATFORMS, SERIAL NUMBER PLATE IS LOCATED ON THE LEFT-HAND SIDE OF THE FRAME.

*EXAMPLE: H00918D625801
918 DRAPER PLATFORM*

(FIRST LINE) H0 - FACTORY (HARVESTER WORKS)
918 - PLATFORM MODEL
D - CONFIGURATION/MODEL SUFFIX
625801 - SEQUENCE (SERIAL) NUMBER
(SECOND LINE) 918 DRAPER PLATFORM - PRODUCT TYPE

ALL INFORMATION ABOVE ALSO PERTAINS TO THE 920 DRAPER PLATFORM

IMPORTANT

THIS PARTS CATALOG CONTAINS COMPLETE PARTS INFORMATION ON THE DRAPER PLATFORMS. IT IS IMPORTANT THAT THE CORRECT SERIAL NUMBER BE USED WHEN ORDERING PARTS.

*COPYRIGHT (C) 2000. DEERE & COMPANY. MOLINE, ILLINOIS.
ALL RIGHTS RESERVED*

DIRECTION ARROW

ARROWS ARE USED WITH ILLUSTRATIONS TO INDICATE THE FRONT OF THE UNIT. "RIGHT-HAND" AND "LEFT-HAND" SIDES ARE DETERMINED BY FACING IN THE DIRECTION OF MACHINE FORWARD TRAVEL.

BOX-ENCLOSED ILLUSTRATIONS

A KEY NUMBER, SHOWN IN THE PARTS LIST, IS ASSIGNED TO A BOX ENCLOSING ALL PARTS SOLD AS A SERVICE ASSEMBLY. A BOX NOT KEYED INCLUDES NON-CURRENT PARTS.

KITS

KIT INFORMATION CAN BE FOUND IMMEDIATELY AFTER THE STORY IN WHICH IT IS USED. THE ILLUSTRATION IS REPEATED WITH ONLY THE KIT PARTS CALLED OUT AND WITH ALL OTHER PARTS SHOWN IN PHANTOM.

JDM REMANUFACTURED COMPONENTS

THE SERVICE PARTS LISTED IN THIS CATALOG ARE INTENDED FOR THE REPAIR OF ORIGINAL EQUIPMENT COMPONENTS. ALTHOUGH MOST SERVICE PARTS MAY BE USED TO REPAIR REMANUFACTURED COMPONENTS, THE REMANUFACTURED DESIGN MAY CHANGE PARTS SUFFICIENTLY SO THAT SERVICE PARTS ARE INADEQUATE OR NOT USABLE.

BOLT AND CAP SCREW STRENGTH IDENTIFICATION

BOLTS AND CAP SCREWS REQUIRED TO HAVE HIGH-STRENGTH QUALITIES EQUIVALENT TO SAE GRADE 8 ARE IDENTIFIED THROUGHOUT THIS CATALOG BY THE DESCRIPTION HS SAE 8. ALL STANDARD BOLTS AND CAP SCREWS ARE SAE GRADE 5 OR LOWER. BOLTS AND CAP SCREWS REQUIRED TO HAVE HIGH-STRENGTH QUALITIES EQUIVALENT TO PROPERTY CLASS 10.9 ARE IDENTIFIED THROUGHOUT THIS CATALOG BY THE DESCRIPTION HS 10.9. ALL STANDARD BOLTS AND CAP SCREWS ARE PROPERTY CLASS 8.8 OR LOWER.

SI UNITS OF MEASURE

METRIC DIMENSIONS ARE GIVEN, WHERE APPLICABLE, THROUGHOUT THIS PARTS CATALOG.

TRADEMARKS

THROUGHOUT THIS PARTS CATALOG, YOU WILL FIND THE FOLLOWING DEERE & COMPANY TRADEMARKS:

DIAL-A-SPEED™
DIAL-A-MATIC™
HARVESTRAK™

POSI-TORQ™
TORQ-GARD SUPREME®
QUIK-TATCH™

CHANGE INDICATOR LINE

CHANGES AFFECTING THE ORDERING OF PARTS ARE IDENTIFIED BY VERTICAL LINES MARKED IN THE L. H. MARGIN OF REVISED PARTS LISTING IMAGES. A LINE IS ALSO AT THE LEFT-HAND EDGE OF THE SAME PART NUMBER IN THE NUMERICAL INDEX TO SHOW THE LOCATION OF REVISED INFORMATION.

FUNCTION CODE

(EXAMPLE - FC: 5000)

FUNCTION CODES ARE LOCATED ON EACH PAGE IN THE UPPER RIGHT-HAND CORNER. THE CODE LISTED IS A GROUPING CODE THAT CAN BE USED FOR WARRANTIES AND FOR DTAC TO IDENTIFY CERTAIN AREAS.

COMPLETE GOODS LISTINGS

COMPLETE GOODS ARE IN BOLD FACE TYPE. ORDER SEPARATELY. DO NOT INCLUDE ON REPLACEMENT PARTS ORDER.

SECTION INDEX

SECTION 05 - GENERAL INFORMATION

SECTION 10 - REEL

SECTION 15 - FRAME, STRIPPERS, DIVIDERS AND PLATES

SECTION 20 - KNIFE, CUTTERBAR AND DRIVES

SECTION 25 - AUGER AND DRIVE

SECTION 30 - HYDRAULICS

SECTION 35 - SHIELDS

SECTION 40 - BELTS, CHAINS, SHEAVES, SPROCKETS AND DECALS

SECTION 45 - NUMERICAL INDEX

**Thanks very much for your reading,
Want to get more information,
Please click here, Then get the complete
manual**

JustClickHere 

NOTE:

**If there is no response to click on the link above,
please download the PDF document first, and then
click on it.**

**Have any questions please write to me:
admin@servicemanualperfect.com**

ALPHABETICAL INDEX

GRID	PAGE	GRID	PAGE
A			
A14	ARM, REEL 918 (-635900)	10-4	
A14	ARM, REEL 920 (646301-656300)	10-4	
A15	ARM, REEL 920 (656301-)	10-5	
C24	AUGER AND SHAFT - 920 (656301-)	25-18	
D1	AUGER BEARINGS 920 (646301-656300)	25-20	
D3	AUGER BEARINGS 920 (656301-)	25-22	
C24	AUGER COVER - 920 (656301-)	25-18	
D1	AUGER CRANK 920 (646301-656300)	25-20	
D3	AUGER CRANK 920 (656301-)	25-22	
C18	AUGER DRIVE RH(920) USE WITH UNIVERSAL DRIVE (685101-)	25-12	
C12	AUGER DRIVE 920 (646301-656300)	25-6	
C14	AUGER DRIVE 920 (656301-666300)	25-8	
C16	AUGER DRIVE 920 (666301-685100)	25-10	
C8	AUGER DRIVE, CROSS 918 (-635100)	25-2	
C10	AUGER DRIVE, CROSS 918 (635101-635900)	25-4	
D1	AUGER FINGERS 920 (646301-656300)	25-20	
D3	AUGER FINGERS 920 (656301-)	25-22	
D6	AUGER FLIGHT EXTENSIONS (920)(656301-)	25-25	
D5	AUGER FLIGHT EXTENSIONS 920 (-655300)	25-24	
C24	AUGER HUB - 920 (656301-)	25-18	
D1	AUGER SHAFTS 920 (646301-656300)	25-20	
D3	AUGER SHAFTS 920 (656301-)	25-22	
C22	AUGER, CROSS AND SHAFT 920 (646301-656300)	25-16	
D7	AUGER, CROSS, BRACKETS 918 (-635900)	25-26	
D11	AUGER, CROSS, BRACKETS 920 (646301-)	25-30	
D9	AUGER, CROSS, BRACKETS 920 (646301-656300)	25-28	
B			
D1	BEARINGS, AUGER 920 (646301-656300)	25-20	
D3	BEARINGS, AUGER 920 (656301-)	25-22	
C20	BEARINGS, SHAFTS, FINGERS, CROSS AUGER 918 (-635900)	25-14	
B22	BOLTED KNIVES AND GUARDS 918 (-635900)	20-12	
C1	BRACKET, KNIFE STORAGE AND SHIELD 920 (646301-)	20-16	
B24	BRACKET, STORAGE, SHIELD AND SPARE KNIFE 918 (-635900)	20-14	
B6			
B6	BRACKET, STUBBLE LIGHT 918 (-635900)	15-15	
B7			
B7	BRACKET, STUBBLE LIGHT 920 (646301-)	15-16	
D7			
D7	BRACKETS, CROSS AUGER 918 (-635900)	25-26	
D11			
D11	BRACKETS, CROSS AUGER 920 (646301-)	25-30	
D9			
D9	BRACKETS, CROSS AUGER 920 (646301-656300)	25-28	
C			
B14			
B14	CASE, KNIFE DRIVE 918 (-635900)	20-4	
E19			
E19	CHAINS, DRIVE, SPROCKETS, TIGHTENERS R.H. 918 (-635900)	40-1	
E20			
E20	CHAINS, DRIVE, SPROCKETS, TIGHTENERS R.H. 920 (646301-)	40-2	
C18			
C18	CLUTCH, AUGER DRIVE (RH) UNIVERSAL DRIVE.....	25-12	
B6			
B6	CONNECTOR, STUBBLE LIGHT 918 (-635900)	15-15	
C24			
C24	COVER, AUGER -920 (656301-)	25-18	
D1			
D1	CRANK, AUGER 920 (646301-656300)	25-20	
D3			
D3	CRANK, AUGER 920 (656301-)	25-22	
C22			
C22	CROSS AUGER AND SHAFT 920 (646301-656300)	25-16	
D7			
D7	CROSS AUGER BRACKETS 918 (-635900)	25-26	
D11			
D11	CROSS AUGER BRACKETS 920 (646301-)	25-30	
D9			
D9	CROSS AUGER BRACKETS 920 (646301-656300)	25-28	
C8			
C8	CROSS AUGER DRIVE 918 (-635100)	25-2	
C10			
C10	CROSS AUGER DRIVE 918 (635101-635900)	25-4	
C20			
C20	CROSS AUGER, BEARINGS, SHAFTS, FINGERS 918 (-635900)	25-14	
B16			
B16	CUTTERBAR DRIVE 918 (-635900)	20-6	
B17			
B17	CUTTERBAR DRIVE 920 (646301-656300)	20-7	
B18			
B18	CUTTERBAR DRIVE 920 (656301-685100)	20-8	
B19			
B19	CUTTERBAR DRIVE (920) (685101-)	20-9	
A15			
A15	CYLINDER ROD EXTENSION 920 (656301-)	10-5	
E10			
E10	CYLINDER, REEL LIFT MASTER.....	30-22	
E5			
E5	CYLINDER, REEL LIFT SLAVE 918 (-635900)	30-16	
E5			
E5	CYLINDER, REEL LIFT SLAVE 920 (646301-)	30-16	
D			
E23			
E23	DECALS, R.H. AND L.H. 918 (-635900)	40-6	
F1			
F1	DECALS, R.H. AND L.H. 920 (646301-)	40-8	
B4			
B4	DIVIDER POINTS 918 (-635900).....	15-13	

ALPHABETICAL INDEX - CONTINUED

GRID		PAGE	GRID		PAGE
C4	DRAPER DRIVE ROLLS		D6	EXTENSIONS, FLIGHT, AUGER	
	918 (-635900)	20 - 20		(920)(656301-)	25 - 25
E12	DRAPER DRIVE TIGHTENER				
	918 (-635900)	30 - 24			
B20	DRAPER IDLER ROLLS AND SUPPORTS			F	
	918 (-635900)	20 - 10			
C2	DRAPER SHIELDS AND SUPPORTS		B5	FEED PLATES	
	918 (-635900)	20 - 18		918 (-635900)	15 - 14
A19	DRAPERS 918 (-635900)	15 - 2	D1	FINGERS, AUGER	
E21	DRIVE BELT, SHEAVES, TIGHTENERS			920 (646301-656300)	25 - 20
	L.H. 918 (-635900)	40 - 3	D3	FINGERS, AUGER	
E22	DRIVE BELT, SHEAVES, TIGHTENERS			920 (656301-)	25 - 22
	L.H. 920 (646301-)	40 - 4	C20	FINGERS, CROSS AUGER, BEARINGS, SHAFTS	
B14	DRIVE CASE, KNIFE			918 (-635900)	25 - 14
	918 (-635900)	20 - 4	D5	FLIGHT EXTENSIONS, AUGER	
E19	DRIVE CHAINS, SPROCKETS, TIGHTENERS			920 (-655300)	25 - 24
	R.H. 918 (-635900)	40 - 1	D6	FLIGHT, AUGER, EXTENSIONS	
E20	DRIVE CHAINS, SPROCKETS, TIGHTENERS			(920)(655301-)	25 - 25
	R.H. 920 (646301-)	40 - 2	B1	FLOOR STRIPPER	
D16	DRIVE LINES, REEL			918 (-635900)	15 - 10
	918 (-635900)	30 - 2	B2	FLOOR STRIPPER	
E3	DRIVE REEL HOSES, HYDRAULIC, PICKUP REEL			920 (646301-656300)	15 - 11
	918 (-635900)	30 - 14	B3	FLOOR STRIPPER	
E4	DRIVE REEL HOSES, HYDRAULIC, PICKUP REEL			920 (656301-)	15 - 12
	920 (646301-)	30 - 15	A20	FRAME	
E11	DRIVE REEL HYDRAULIC MOTOR, HYDROSTATIC	30 - 23		918 (-635900)	15 - 4
C4	DRIVE ROLLS, DRAPER		A22	FRAME	
	918 (-635900)	20 - 20		920 (646301-656300)	15 - 6
C7	DRIVE SHAFT, MAIN	25 - 1	A24	FRAME	
A16	DRIVE SHAFTS, PICKUP REEL			920 (656301-)	15 - 8
	918 (-635900)	10 - 6			
A16	DRIVE SHAFTS, PICKUP REEL			G	
	920 (646301-)	10 - 6			
E12	DRIVE TIGHTENER, DRAPER		B22	GUARDS AND BOLTED KNIVES	
	918 (-635900)	30 - 24		918 (-635900)	20 - 12
C12	DRIVE, AUGER 920 (646301-656300)	25 - 6			
C14	DRIVE, AUGER 920 (656301-666300)	25 - 8		H	
C16	DRIVE, AUGER 920 (666301-685100)	25 - 10			
C8	DRIVE, CROSS AUGER		B6	HARNESS, STUBBLE LIGHT	
	918 (-635100)	25 - 2		918 (-635900)	15 - 15
C10	DRIVE, CROSS AUGER		B7	HARNESS, STUBBLE LIGHT	
	918 (635101-635900)	25 - 4		920 (646301-)	15 - 16
B16	DRIVE, CUTTERBAR		E3	HOSES, HYDRAULIC DRIVE REEL, PICKUP REEL	
	918 (0635900)	20 - 6		918 (-635900)	30 - 14
B17	DRIVE, CUTTERBAR		E4	HOSES, HYDRAULIC DRIVE REEL, PICKUP REEL	
	920 (646301-656300)	20 - 7		920 (646301-)	30 - 15
B18	DRIVE, CUTTERBAR		C24	HUB, AUGER - 920	
	920 (656301-685100)	20 - 8		(656301-)	25 - 18
B19	DRIVE, CUTTERBAR (920)(685101-)	20 - 9	E3	HYDRAULIC DRIVE REEL HOSES, PICKUP REEL	
				918 (-635900)	30 - 14
	E		E4	HYDRAULIC DRIVE REEL HOSES, PICKUP REEL	
A13	ECCENTRIC SPIDER, PICKUP REEL			920 (646301-)	30 - 15
	918 (635900-)	10 - 3	E11	HYDRAULIC MOTOR, HYDROSTATIC DRIVE REEL	30 - 23
A13	ECCENTRIC SPIDER, PICKUP REEL		E11	HYDROSTATIC DRIVE REEL HYDRAULIC MOTOR	30 - 23
	920 (646301-)	10 - 3			
E15	END SHIELD			I	
	918 (635101-635900)	35 - 2			
E16	END SHIELD		B20	IDLER ROLLS AND SUPPORTS, DRAPER	
	920 (646301-656300)	35 - 3		918 (-635900)	20 - 10
E17	END SHIELD		B12	IDLER, KNIFE DRIVE	
	920 (656301-)	35 - 4		918 (-635900)	20 - 1
A15	EXTENSION CYL. ROD		B12	IDLER, KNIFE DRIVE	
	920 (656301-)	10 - 5		920 (646301-656300)	20 - 1
D5	EXTENSIONS, AUGER FLIGHT				
	920 (-655300)	25 - 24			

ALPHABETICAL INDEX - CONTINUED

GRID		PAGE	GRID		PAGE
B13	IDLER, KNIFE DRIVE 920 (656301-)	20-2	E10	MASTER CYLINDER, REEL LIFT	30-22
			D13	METRIC KEY STOCK KIT	25-32
			E11	MOTOR, HYDROSTATIC DRIVE REEL HYDRAULIC	30-23
	K		E8	MOTOR, REEL (EATON) (655583-)	30-20
D13	KEY STOCK, METRIC KIT	25-32	E6	MOTOR, REEL (ROSS NO. K85921) (-655582)	30-18
D13	KIT, METRIC KEY STOCK	25-32	E15	MOUNTING, END SHIELD 918 (635101-635900)	35-2
B14	KNIFE DRIVE CASE 918 (-635900)	20-4	E16	MOUNTING, END SHIELD 920 (646301-656300)	35-3
B12	KNIFE DRIVE IDLER 918 (-635900)	20-1	A16	MOUNTINGS, PICKUP REEL 918 (-635900)	10-6
B12	KNIFE DRIVE IDLER 920 (646301-656300)	20-1	A16	MOUNTINGS, PICKUP REEL 920 (646301-)	10-6
B13	KNIFE DRIVE IDLER 920 (656301-)	20-2		P	
B12	KNIFE DRIVE TIGHTENER 918 (-635900)	20-1	A16	PICKUP REEL DRIVE SHAFT 920 (646301-)	10-6
B12	KNIFE DRIVE TIGHTENER 920 (646301-656300)	20-1	A16	PICKUP REEL DRIVE SHAFTS 918 (-635900)	10-6
B13	KNIFE DRIVE TIGHTENER 920 (656301-)	20-2	A13	PICKUP REEL ECCENTRIC SPIDER 918 (635900-)	10-3
C1	KNIFE STORAGE BRACKET AND SHIELD 920 (646301-)	20-16	A13	PICKUP REEL ECCENTRIC SPIDER 920 (646301-)	10-3
B24	KNIFE, SPARE, STORAGE BRACKET AND SHIELD 918 (-635900)	20-14	E3	PICKUP REEL HYDRAULIC DRIVE REEL HOSES 918 (-635900)	30-14
B22	KNIVES, BOLTED AND GUARDS 918 (-635900)	20-12	A16	PICKUP REEL MOUNTINGS 918 (-635900)	10-6
	L		A16	PICKUP REEL MOUNTINGS 920 (646301-)	10-6
D22	LIFT LINES, REEL 918 (-635900)	30-8	A16	PICKUP REEL SPROCKETS 918 (-635900)	10-6
D24	LIFT LINES, REEL 920 (646301-656300)	30-10	A16	PICKUP REEL SPROCKETS 920 (646301-)	10-6
E1	LIFT LINES, REEL 920 (656301-)	30-12	A11	PICKUP REEL 918 (-635900)	10-1
B8	LIGHTS, MARKER 918 (-635900)	15-17	A12	PICKUP REEL 920 (646301-)	10-2
B9	LIGHTS, MARKER 920 (646301-)	15-18	E4	PICKUP REEL, HYDRAULIC DRIVE REEL HOSES 920 (646301-)	30-15
B6	LIGHTS, STUBBLE (OPTIONAL) 918 (-635900)	15-15	A15	PIN, REEL ARM 920 (656301-)	10-5
B7	LIGHTS, STUBBLE (OPTIONAL) 920 (646301-)	15-16	B5	PLATES, FEED 918 (-635900)	15-14
D18	LINES, HYDRAULIC REEL DRIVE 920 (646301-656300)	30-4	B4	POINTS, DIVIDER 918 (-635900)	15-13
D20	LINES, HYDRAULIC REEL DRIVE 920 (656301-)	30-6		R	
D16	LINES, REEL DRIVE 918 (-635900)	30-2	A14	REEL ARM 918 (-635900)	10-4
D22	LINES, REEL LIFT 918 (-635900)	30-8	A14	REEL ARM 920 (646301-656300)	10-4
D24	LINES, REEL LIFT 920 (646301-656300)	30-10	A15	REEL ARM 920 (656301-)	10-5
E1	LINES, REEL LIFT 920 (656301-)	30-12	D16	REEL DRIVE LINES 918 (-635900)	30-2
	M		D18	REEL DRIVE LINES 920 (646301-656300)	30-4
C7	MAIN DRIVE SHAFT	25-1	D20	REEL DRIVE LINES 920 (656301-)	30-6
B8	MARKER LIGHTS 918 (-635900)	15-17	E3	REEL HOSES, HYDRAULIC DRIVE, PICKUP REEL 918 (-635900)	30-14
B9	MARKER LIGHTS 920 (646301-)	15-18	E4	REEL HOSES, HYDRAULIC DRIVE, PICKUP REEL 920 (646301-)	30-15

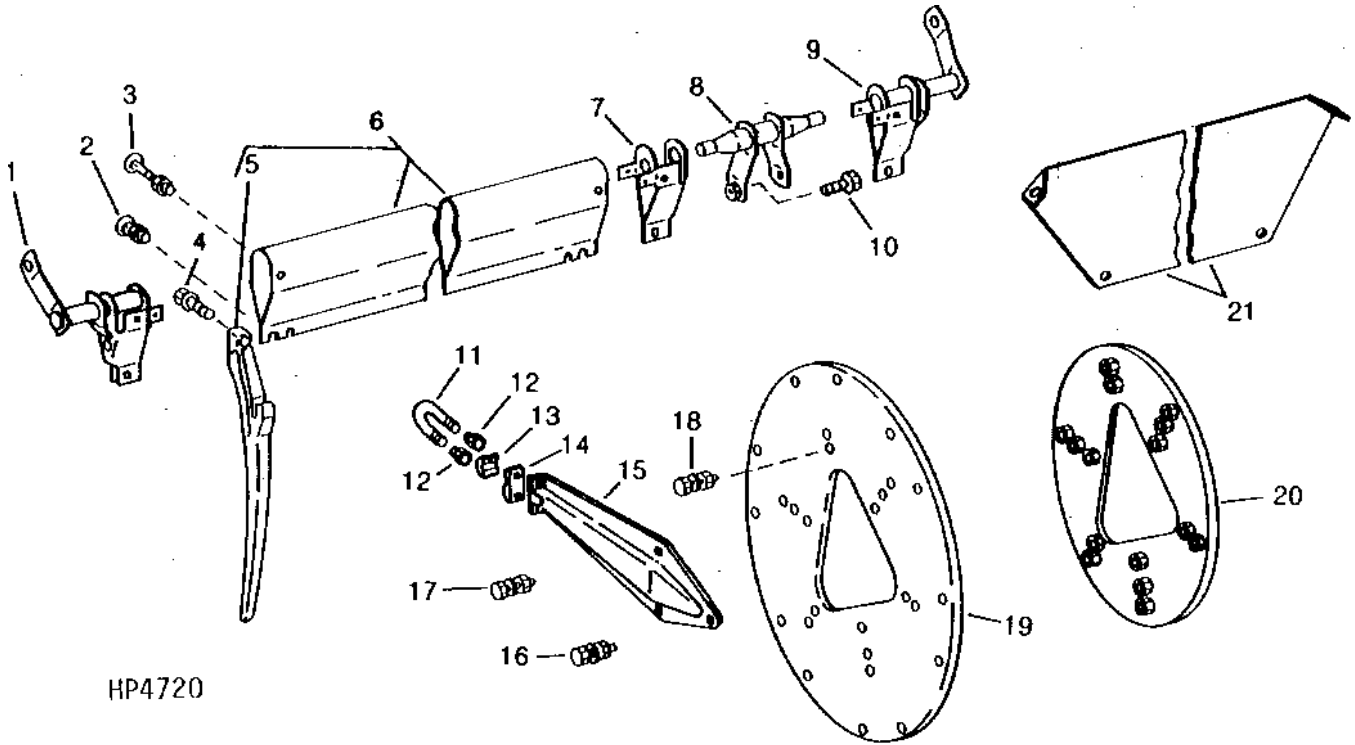
ALPHABETICAL INDEX - CONTINUED

<i>GRID</i>		<i>PAGE</i>	<i>GRID</i>		<i>PAGE</i>
D22	REEL LIFT LINES		E16	SHOE, SKID, SHIELD	
	918 (-635900)	30 - 8		920 (646301-656300)	35 - 3
D24	REEL LIFT LINES		E5	SLAVE CYLINDER, REEL LIFT	
	920 (646301-656300)	30 - 10		918 (-635900)	30 - 16
E1	REEL LIFT LINES		E5	SLAVE CYLINDER, REEL LIFT	
	920 (656301-)	30 - 12		920 (646301-)	30 - 16
E10	REEL LIFT MASTER CYLINDER	30 - 22	B24	SPARE KNIFE, STORAGE BRACKET AND SHIELD	
E5	REEL LIFT SLAVE CYLINDER			918 (-635900)	20 - 14
	918 (-635900)	30 - 16	A13	SPIDER, ECCENTRIC, PICKUP REEL	
E5	REEL LIFT SLAVE CYLINDER			918 (635900-)	10 - 3
	920 (646301-)	30 - 16	A13	SPIDER, ECCENTRIC, PICKUP REEL	
E8	REEL MOTOR (EATON)			920 (646301-)	10 - 3
	(655583-)	30 - 20	C18	SPROCKET, AUGER DRIVE (RH)	25 - 12
E6	REEL MOTOR (ROSS NO. K85921)		A16	SPROCKETS, PICKUP REEL	
	(-655582)	30 - 18		918 (-635900)	10 - 6
A11	REEL, PICKUP 918 (-635900)	10 - 1	A16	SPROCKETS, PICKUP REEL	
A12	REEL, PICKUP 920 (646301-)	10 - 2		920 (646301-)	10 - 6
C4	ROLLS, DRAPER DRIVE		E19	SPROCKETS, TIGHTENERS, DRIVE CHAINS	
	918 (-635900)	20 - 20		R.H. 918 (-635900)	40 - 1
B20	ROLLS, DRAPER IDLER		E20	SPROCKETS, TIGHTENERS, DRIVE CHAINS	
	918 (-635900)	20 - 10		R.H. 920 (646301-)	40 - 2
			A15	STOP, CYL. ROD EXTENSION	
	S			920 (656301-)	10 - 5
C24	SHAFT AND AUGER - 920		C1	STORAGE BRACKET, KNIFE AND SHIELD	
	(656301-)	25 - 18		920 (646301-)	20 - 16
C22	SHAFT AND CROSS AUGER		B24	STORAGE BRACKET, SHIELD AND SPARE KNIFE	
	920 (646301-656300)	25 - 16		918 (-635900)	20 - 14
C18	SHAFT, AUGER DRIVE (RH)	25 - 12	A20	STRIPPER FRAME	
B19	SHAFT, CUTTERBAR DRIVE(685101-)	20 - 9		918 (-635900)	15 - 4
C7	SHAFT, MAIN DRIVE	25 - 1	B1	STRIPPER, FLOOR	
D1	SHAFTS, AUGER			918 (-635900)	15 - 10
	920 (646301-656300)	25 - 20	B2	STRIPPER, FLOOR	
D3	SHAFTS, AUGER			920 (646301-656300)	15 - 11
	920 (656301-)	25 - 22	B7	STUBBLE LIGHT HARNESS	
C20	SHAFTS, FINGERS, CROSS AUGER, BEARINGS			920 (646301-)	15 - 16
	918 (-635900)	25 - 14	B6	STUBBLE LIGHTS (OPTIONAL)	
B19	SHEAVE, CUTTERBAR DRIVE.....	20 - 9		918 (-635900)	15 - 15
E21	SHEAVES, TIGHTENERS, DRIVE BELT		B7	STUBBLE LIGHTS (OPTIONAL)	
	L.H. 918 (-635900)	40 - 3		920 (646301-)	15 - 16
E22	SHEAVES, TIGHTENERS, DRIVE BELT		C2	SUPPORTS AND SHIELDS, DRAPER	
	L.H. 920 (646301-)	40 - 4		918 (-635900)	20 - 18
E15	SHIELD		B20	SUPPORTS, DRAPER IDLER ROLLS	
	918 (635101-635900)	35 - 2		918 (-635900)	20 - 10
E16	SHIELD				
	920 (646301-656300)	35 - 3		T	
E14	SHIELD 918 (-635100)	35 - 1	E12	TIGHTENER, DRAPER DRIVE	
C18	SHIELD, AUGER DRIVE (RH)	25 - 12		918 (-635900)	30 - 24
E17	SHIELD, END		E21	TIGHTENERS, DRIVE BELT, SHEAVES	
	920 (656301-)	35 - 4		L.H. 918 (-635900)	40 - 3
A20	SHIELD, FRAME (8820)		E22	TIGHTENERS, DRIVE BELT, SHEAVES	
	918 (-635900)	15 - 4		L.H. 920 (646301-)	40 - 4
C1	SHIELD, KNIFE STORAGE BRACKET		E19	TIGHTENERS, DRIVE CHAINS, SPROCKETS	
	920 (646301-)	20 - 16		R.H. 918(-635900).....	40 - 1
E15	SHIELD, SKID SHOE		E20	TIGHTENERS, DRIVE CHAINS, SPROCKETS	
	918 (635101-635900)	35 - 2		R.H. 920 (646301-)	40 - 2
E16	SHIELD, SKID SHOE				
	920 (646301-656300)	35 - 3			
B24	SHIELD, SPARE KNIFE AND STORAGE BRACKET				
	918 (-635900)	20 - 14			
C2	SHIELDS AND SUPPORTS, DRAPER				
	918 (-635900)	20 - 18			
E17	SHIELDS, DRIVE				
	920 (656301-)	35 - 4			
E15	SHOE, SKID, SHIELD				
	918 (635101-635900)	35 - 2			

A11

REEL

PICKUP REEL
 918 (-635900)
 HP4720 -UN-01JAN94

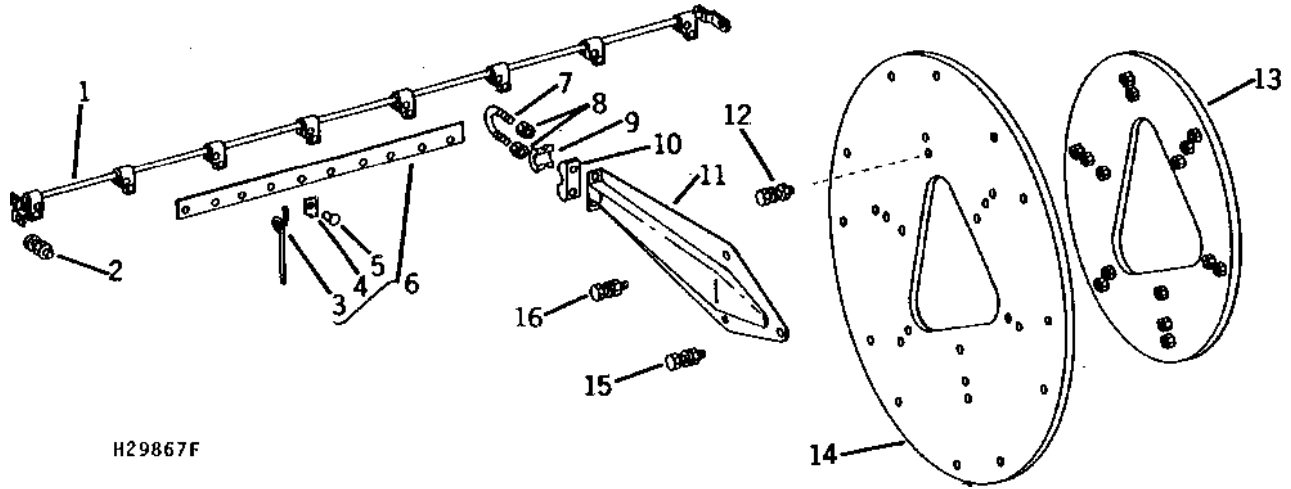


KEY	PART NO.	PART NAME	QTY	SERIAL NO.	REMARKS
1	AH122157	BRACKET	6	L.H.	
2	03H1539	BOLT	6	5/16" X 5/8"	
	H127039	NUT	6	7.925 MM (5/16") CADMIUM, (SUB H76696)	
3	H76696	LOCK NUT	6	7.925 MM (5/16")	
	03H1791	BOLT	6	5/16" X 2-1/2"	
	H127039	NUT	6	7.925 MM (5/16") CADMIUM, (SUB H76696)	
4	H76696	LOCK NUT	6	7.925 MM (5/16")	
	H127037	SCREW	AR	NO. 8 (ORIGINAL EQUIPMENT)	
	37H160	SCREW	AR	NO. 10 (SUB FOR H127037 WHEN HOLE IN BAT IS STRIPPED)	
5	AH129419	SCREW AND WASHER KIT	AR	(SUB FOR 37H160 WHEN NO. 10 HOLE IS STRIPPED)	
	H127035	FINGER	234		
6	AH122150	FINGER	6	CENTER	
	AH122151	FINGER	12	R.H.AND L.H.	
7	AH122160	RETAINER	24		
8	AH122159	BRACKET	12	CENTER	
9	AH122158	BRACKET	6	R.H.	
10	H127043	BOLT	AR	7.925 X 15.748 MM (5/16" X 0.620")	
11	E40203	U-BOLT	36		
12	E45229	LOCK NUT	72	6.350 MM (1/4")	
13	E40205	CAP	36		
14	E40206	BASE	36		
15	AH97207	ARM	36		
16	19H1849	CAP SCREW	24	5/16" X 1-1/4"	
	12M7065	LOCK WASHER	24	8.100 MM (0.319")	
	14H785	NUT	24	5/16"	
17	19H2020	CAP SCREW	48	5/16" X 1/2"	
	12M7065	LOCK WASHER	48	8.100 MM (0.319")	
	14H785	NUT	48	5/16"	
18	19H1905	CAP SCREW	24	5/16" X 1"	
	12M7065	LOCK WASHER	24	8.100 MM (0.319")	
	14H785	NUT	24	5/16"	
19	H98690	PLATE	4		
20	AH97208	PLATE	4		
21	H134693	SHIELD	12		

A12

REEL

PICKUP REEL
 920 (646301-)
 H29867F -UN-01JAN94



KEY	PART NO.	PART NAME	QTY	SERIAL NO.	REMARKS
1	AH97186	SHAFT	6		
2	03H1810	BOLT	144	1/4" X 1-1/2"	
	14H786	NUT	144	1/4"	
3	H33316	FINGER	258		
4	H33317	CLIP	258		
5	H33318	RIVET	258		
6	AH97195	SLAT	6	4.775 X 25.400 MM (3/16" X 1")	CENTER
	AH97196	SLAT	12		R.H. AND L.H.
7	E40203	U-BOLT	24		
8	E45229	LOCK NUT	48	6.350 MM (1/4")	
9	E40205	CAP	24		
10	E40206	BASE	24		
11	AH97207	ARM	24		
12	19H1905	CAP SCREW	24	5/16" X 1"	
	12M7065	LOCK WASHER	24	8.100 MM (0.319")	
	14H785	NUT	24	5/16"	
13	AH97208	PLATE	4		STIFFENING
14	H98690	PLATE	4		SPIDER
15	19H1849	CAP SCREW	24	5/16" X 1-1/4"	
	12M7065	LOCK WASHER	24	8.100 MM (0.319")	
	14H785	NUT	24	5/16"	
16	19H2020	CAP SCREW	48	5/16" X 1/2"	
	12M7065	LOCK WASHER	48	8.100 MM (0.319")	
	14H785	NUT	48	5/16"	

BH77042 (COMPLETE GOODS) BAT AND CENTERTUBE BUNDLE - 20' REEL

A13

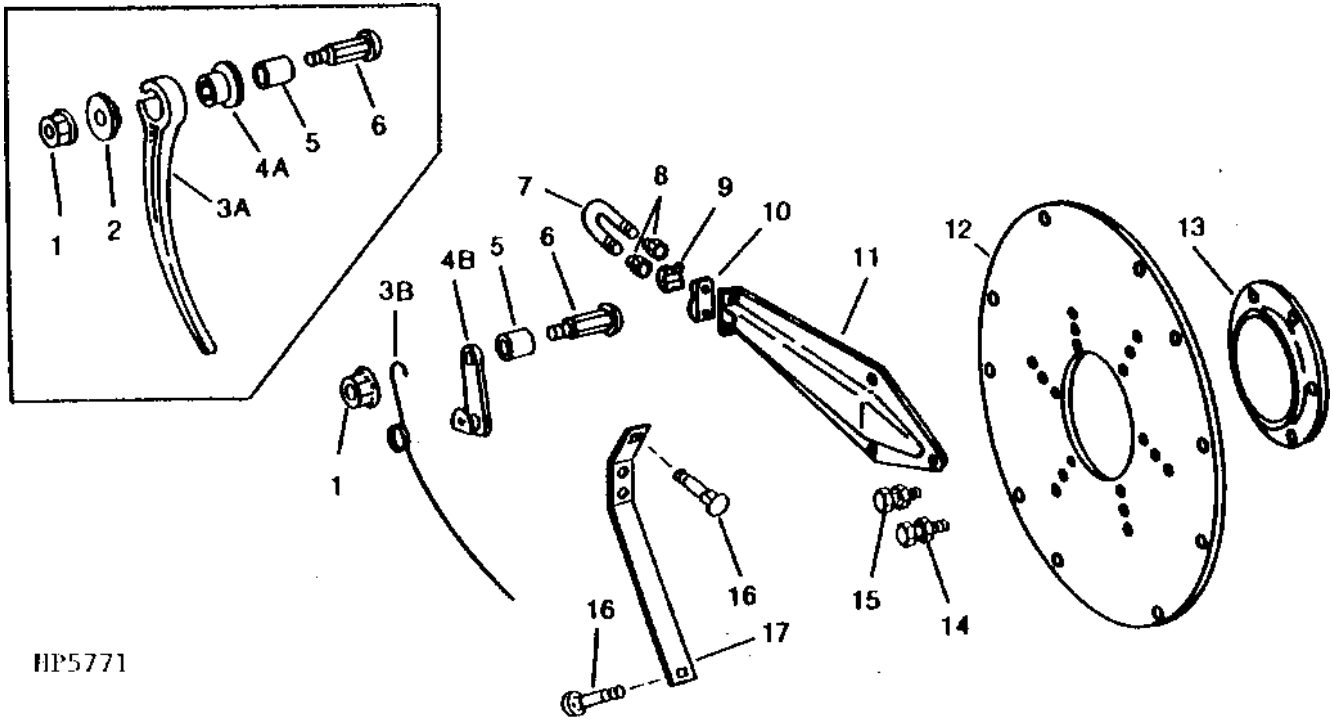
REEL

PICKUP REEL ECCENTRIC SPIDER

918 (-635900)

920 (646301-)

HP5771 -UN-01JAN94



HP5771

KEY	PART NO.	PART NAME	QTY	SERIAL NO.	REMARKS
1	E59584	FLANGE NUT	6		12.700 MM (1/2") (RIGID)
2	H132148	RETAINER	6		(RIGID)
3A	H132147	FINGER	6	-656329	(RIGID)
3B	AH97221	STRAP	6	656330-	
4A	H132149	BRACKET	6	-656329	(RIGID)
4B	H33332	FINGER	6	656330-	R.H.
	H33333	FINGER	6	656330-	L.H.
5	E40212	SPACER	6		(RIGID)
6	E59585	BOLT	6		(RIGID)
7	E40203	U-BOLT	6		
8	M63707	LOCK NUT	12		6.350 MM (1/4")
9	E40205	CAP	6		
10	E40206	BASE	6		
11	AH97207	ARM	6		
12	H98692	PLATE	1		
13	H98693	RING	1		
14	19H1900	CAP SCREW	6		5/16" X 3/4"
	12M7065	LOCK WASHER	6		8.100 MM (0.319")
	14H785	NUT	6		5/16"
15	19H2020	CAP SCREW	18		5/16" X 1/2"
	12M7065	LOCK WASHER	18		8.100 MM (0.319")
	14H785	NUT	18		5/16"
16	03H1893	BOLT	AR		1/4" X 1/2"
	E45229	LOCK NUT	AR		1/4"
17	H98764	BRACE	6		

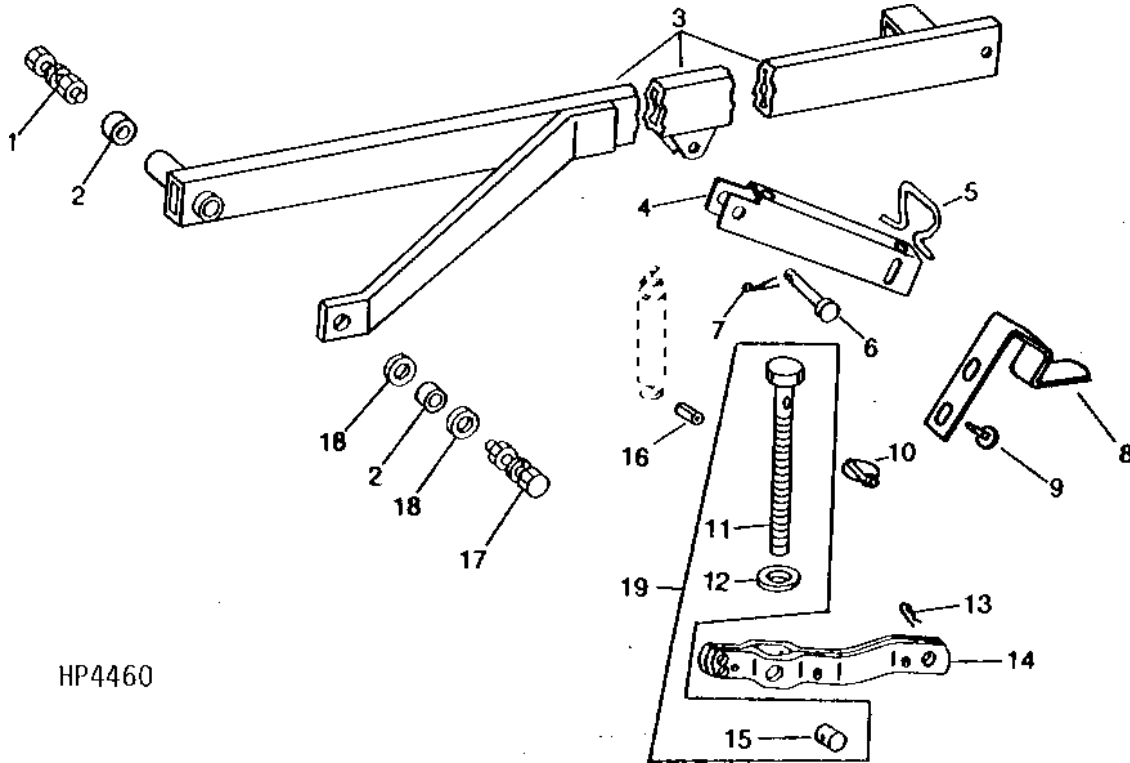
NOTE: QUANTITIES SHOWN ARE FOR ONE END ONLY.

BH76722 (COMPLETE GOODS) FINGER ASSEMBLY - AUX PICKUP

A14

REEL

REEL ARM
 918 (-635900)
 920 (646301-656300)
 HP4460 -UN-01JAN94



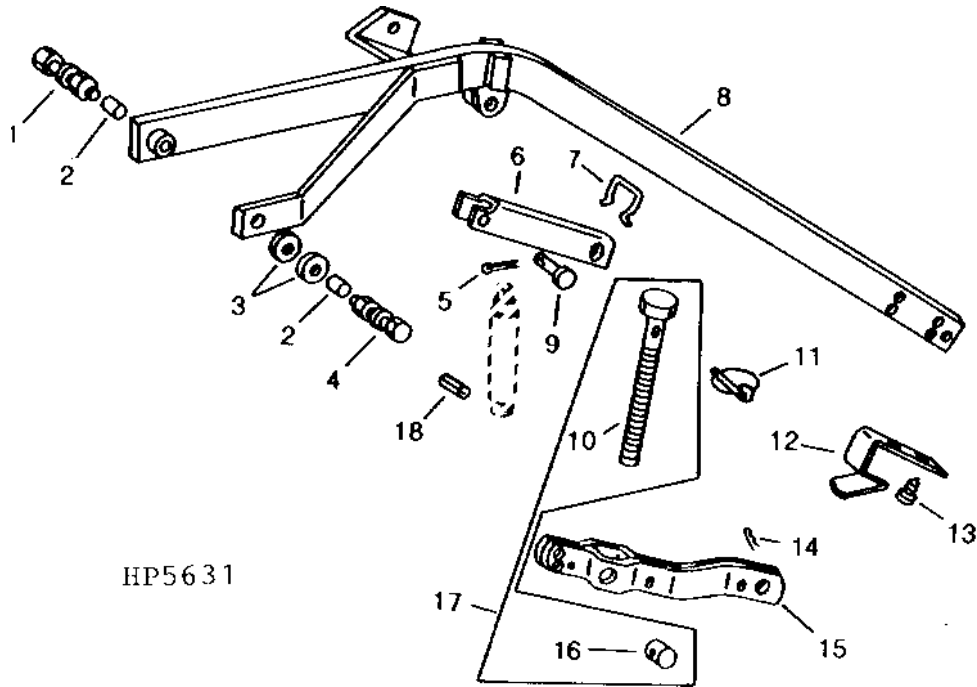
HP4460

KEY	PART NO.	PART NAME	QTY	SERIAL NO.	REMARKS
1	19H1909	CAP SCREW	1		3/4" X 3-3/4", (SUB 19H1909) (R.H.)
	19H2000	CAP SCREW	1		3/4" X 5", (L.H.)
	12H236	LOCK WASHER	2		3/4"
	14H794	NUT	2		3/4"
2	M63139	BUSHING	4		(SUB H147956)
3	AH125393	LIFT ARM	1		(L.H.)
	AH112088	LIFT ARM	1		(R.H.)
4	H94005	STOP	2	-635825	(SUB H137017)
	H137017	STOP	2		
5	H87239	RETAINER	2	-635825	
	H137016	RETAINER	2		STOP
6	H98494	PIN	2		DRILLED
7	11H236	COTTER PIN	2		1/8" X 1"
8	H98698	LATCH	2		STOP
9	H87048	SCREW	4		6.350 X 12.700 MM (1/4" X 1/2") SELF-TAPPING
10	B15648	QUICK LOCK PIN	1	-625800	
	M72598	QUICK LOCK PIN	1		
11	BOLT	2		(SUB AH138224)
12	WASHER	2		(SUB AH138224)
13	11M7054	COTTER PIN	2		6.300 X 32 MM
14	AH120150	SUPPORT	2		
15	PIN	2		(SUB AH138224)
16	H123605	PIN	2	-661300	14.700 X 35 MM (0.579" X 1.378") M14 X 35 (SPRING) (SUB 34M7135)
	34M7135	SPRING PIN	2		14 X 40 MM (0.551" X 1.575")
17	19H1734	CAP SCREW	2		5/8" X 2"
	12H294	LOCK WASHER	2		5/8"
	14H760	NUT	2		5/8"
18	24H1368	WASHER	4		21/32" X 1-5/16" X 0.090"
19	AH138224	KIT	1		

A15

REEL

REEL ARM
920 (656301-)
HP5631 -UN-01JAN94



HP5631

KEY	PART NO.	PART NAME	QTY	SERIAL NO.	REMARKS
1	19M7832	SCREW	1	-656255	M20 X 100, R.H.
	19M7963	CAP SCREW	1	656256-	M20 X 100
	19M7968	CAP SCREW	1		M20 X 130, L.H.
	12M7070	LOCK WASHER	2		20.200 MM
	14M7277	NUT	2		M20
2	H147956	BUSHING	1		20.600 X 25.400 X 11 MM (0.811" X 1" X 0.433")
3	24M7241	WASHER	4		17 X 34 X 4 MM
4	19M7409	CAP SCREW	2		M16 X 50, (SUB 19M7409)
	12M7069	LOCK WASHER	2		16.200 MM
	14M7276	NUT	2		M16
5	11H236	COTTER PIN	2		1/8" X 1"
6	H137017	STOP	2		
7	H87239	RETAINER	1		R.H.
	H137016	RETAINER	1		L.H.
8	AH125393	LIFT ARM	1		L.H.
	AH112088	LIFT ARM	1		R.H.
	H98494	PIN	2	-661300	12.700 X 69.088 MM (1/2" X 2.720")
10	BOLT	2		(SUB AH141972)
11	M72598	QUICK LOCK PIN	2		
12	H98698	LATCH	2		STOP
13	37M7089	SCREW	4		M6 X 12 SELF-TAPPING
14	11M7054	COTTER PIN	2		6.300 X 32 MM
15	AH120150	SUPPORT	2		
16	PIN	2		(SUB AH141972)
17	AH141972	KIT	2		
18	H123605	PIN	2	-661300	14.700 X 35 MM (0.579" X 1.378") M14 X 35
	34M7135	SPRING PIN	2		(SPRING) (SUB 34M7135) 14 X 40 MM (0.551" X 1.575")

A16

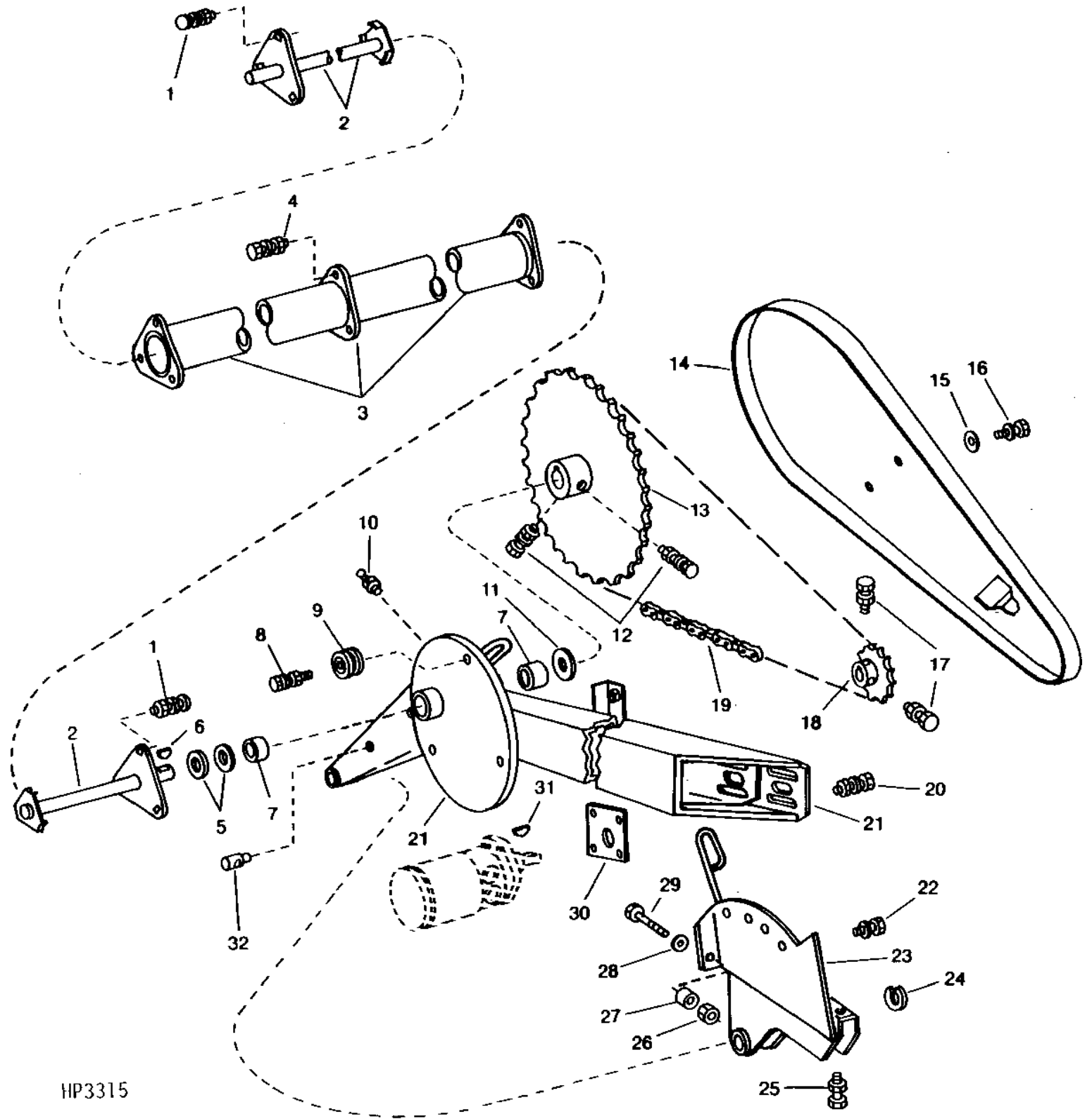
REEL

PICKUP REEL DRIVE SHAFTS, MOUNTINGS, AND SPROCKETS

918 (-635900)

920 (646301-)

HP3315 -UN-01JAN94



HP3315

A17

REEL

PICKUP REEL DRIVE SHAFTS, MOUNTINGS, AND SPROCKETS - CONTINUED

918 (-635900)

920 (646301-)

KEY	PART NO.	PART NAME	QTY	SERIAL NO.	REMARKS
1	03H1495	BOLT	6	3/8" X 1-1/2"	
	12H304	LOCK WASHER	6	3/8"	
	H20024	LOCK NUT	6	9.525 MM (3/8")	
2	AH127485	SHAFT	2	DRIVE	
3	AH97165	SHAFT	1	(918) CENTER	
	AH97166	SHAFT	1	(920) CENTER	
4	19H1732	CAP SCREW	6	3/8" X 1-1/4"	
	12H304	LOCK WASHER	6	3/8"	
	H20024	LOCK NUT	6	9.525 MM (3/8")	
5	24H1553	WASHER	4	1-5/8" X 2-1/4" X 0.194"	
6	26H46	SHAFT KEY	2	3/8" X 2-1/8"	
7	H98743	BUSHING	4		
8	19H1765	CAP SCREW	6	3/8" X 1-3/4"	
	12H304	LOCK WASHER	6	3/8"	
	14H812	NUT	6	3/8"	
9	AE24403	BALL BEARING	6		
10	JD7759	LUBRICATION FITTING	2		
11	24H1520	WASHER	2	1-15/32" X 2" X 0.105"	
12	22H853	SET SCREW	4	3/8" X 7/8"	
	14H732	NUT	4	3/8"	
13	AH88831	CHAIN SPROCKET	2	81 TEETH, DRIVEN	
14	AH97012	SHIELD	2		
15	24H1136	WASHER	4	11/32" X 11/16" X 0.065"	
16	19H1900	CAP SCREW	4	5/16" X 3/4"	
	12M7065	LOCK WASHER	4	8.100 MM (0.319")	
17	22H818	SET SCREW	4	5/16" X 3/4"	
	14H611	NUT	4	5/16"	
18	AH96655	CHAIN SPROCKET	2	13 TEETH	
19	AH96647	LINK CHAIN	2	ROLLER, DRIVE, TYPE 50, 5/8" PITCH, 164 LINKS	
20	03H1764	BOLT	8	1/2" X 1-3/4"	
	12H301	LOCK WASHER	8	1/2"	
	14H809	NUT	8	1/2"	
21	AH120564	SUPPORT	1	(R.H.)	
	AH120565	SUPPORT	1	(L.H.)	
22	19H1792	CAP SCREW	2	1/2" X 1"	
	12H301	LOCK WASHER	2	1/2"	
23	AH120562	DRAWER SLIDE	1	(R.H.)	
	AH120563	DRAWER SLIDE	1	(L.H.)	
24	C3142E	SNAP RING	2		
25	H93483	SET SCREW	2	15.875 X 57.150 MM (5/8" X 2-1/4")	
	14H821	NUT	2	5/8"	
26	E54809	LOCK NUT	2		
27	H81277	BUSHING	2		
28	24H1111	WASHER	2	17/32" X 1-1/16" X 0.090"	
29	08H4654	CAP SCREW	2	1/2" X 7-1/2"	
30	H87360	SHIM	2		
31	26H22	SHAFT KEY	2	1/4" X 1"	
32	H89110	TRUNNION	2		

MEMORANDA

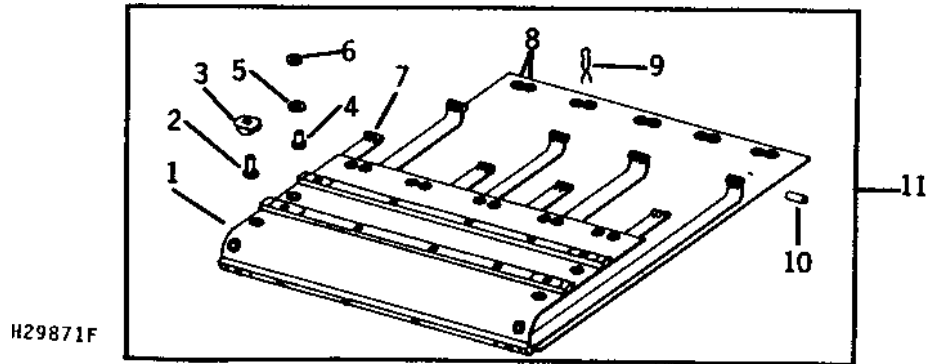
MEMORANDA

A19

FRAME, STRIPPERS, DIVIDERS, AND PLATES

DRAPERS

918 (-635900)
H29871F -UN-01JAN94



KEY	PART NO.	PART NAME	QTY	SERIAL NO.	REMARKS
1	H92518	SLAT	5		
2	P41339	RIVET	20		5.131 X 23.876 MM (0.202" X 0.940")
3	H31621	CLIP	10		SLAT END
4	P41338	RIVET	16		5.131 X 15.748 MM (0.202" X 0.620") (QUANTITY OF 20 IN KIT AH137747)
5	P13759	WASHER	16		3.962 X 31.750 X 4.775 MM (5/32" X 1-1/4" X 3/16") LEATHER (QUANTITY OF 20 IN KIT AH137747)
6	H31622	WASHER	16		5.436 X 12.700 X 0.813 MM (0.214" X 1/2" X 0.032") BURR, RIVET (QUANTITY OF 20 IN KIT AH137747)
7	AH92156	BELT	2		DRIVE, INNER
	AH92157	BELT	2		DRIVE, OUTER
8	AP20769	GROMMET	20		(NO LONGER AVAILABLE) (SUB AH92155)
9	H31624	CLAMP	5		
10	H78717	PIN	2		(QUANTITY OF 10 IN KIT AH137747)
11	AH137747	KIT	1		
..	AH92155	CONVEYOR	1		

NOTE: QUANTITIES SHOWN ARE FOR ONE UNIT. THREE UNITS USED PER MACHINE.

MEMORANDA